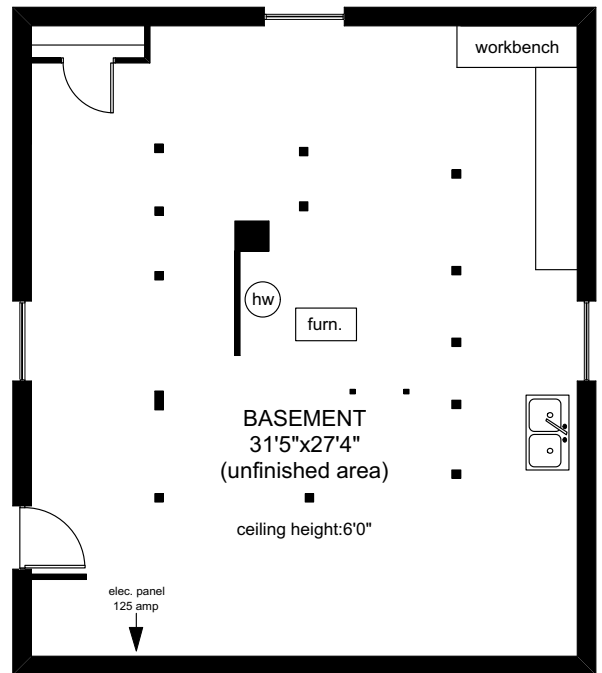
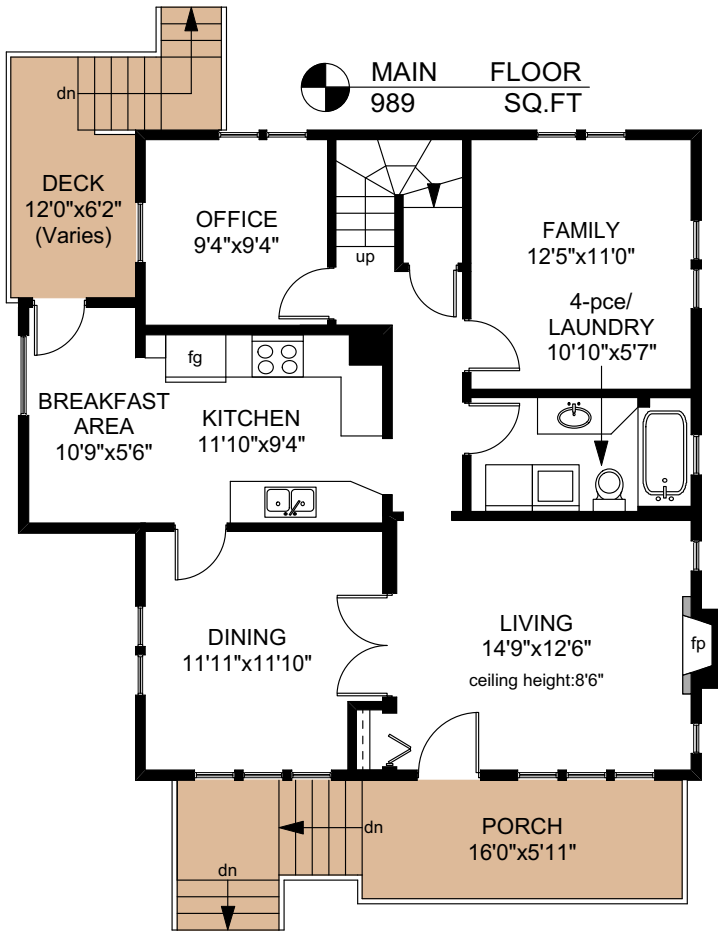
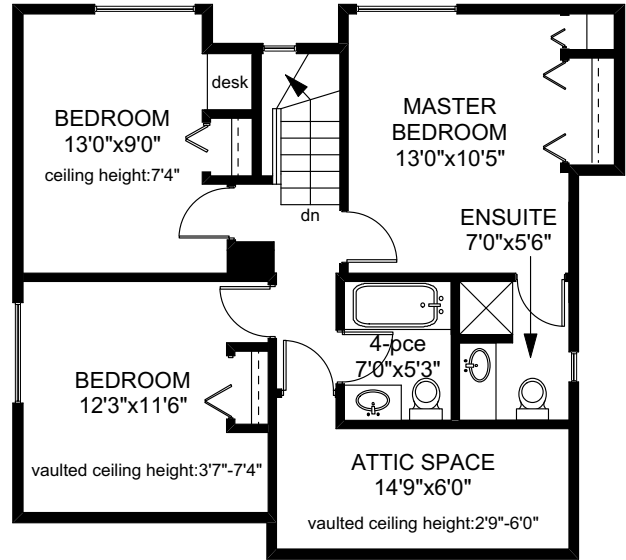
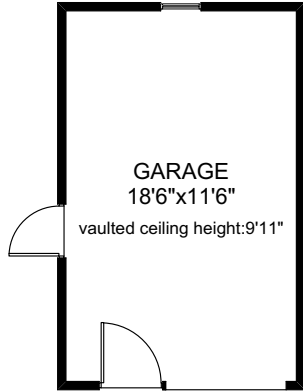
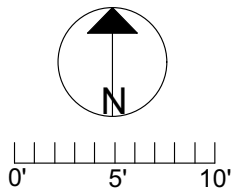


2368 ROSARIO STREET



	FINISHED SQ. FT.	UNFINISHED SQ. FT.	TOTAL SQ. FT.
MAIN	989	0	989
UPPER	658	0	658
LOWER	0	968	968
TOTAL	1647	968	2615
GARAGE	0	238	238
PORCH	0	95	95
DECK	0	64	64



PREPARED FOR THE EXCLUSIVE USE OF
MARC OWEN-FLOOD,
PERSONAL REAL ESTATE CORPORATION
ASSOCIATE BROKER, & SYLVIA THERRIEN,
PERSONAL REAL ESTATE CORPORATION,
OF NEWPORT REALTY Ltd.

MEASURED ON: 03/20/17
DRAWING FILE: 14570

Tafe Measure VICTORIA, B.C.
Ph. 883.8894
www.tafemeasure.com

NOTE: This floor plan is provided by Newport Realty Ltd. as a convenient reference only, and is not to be relied upon as accurate. Prospective Buyers must satisfy themselves not only of the actual measurements, but also to the status of any finished space shown on this floor plan, specifically in relation to minimum ceiling height for habitable rooms required by the BC Building Code, allowable finished floor area in relation to current zoning, and determination if space was developed with necessary municipal permits.