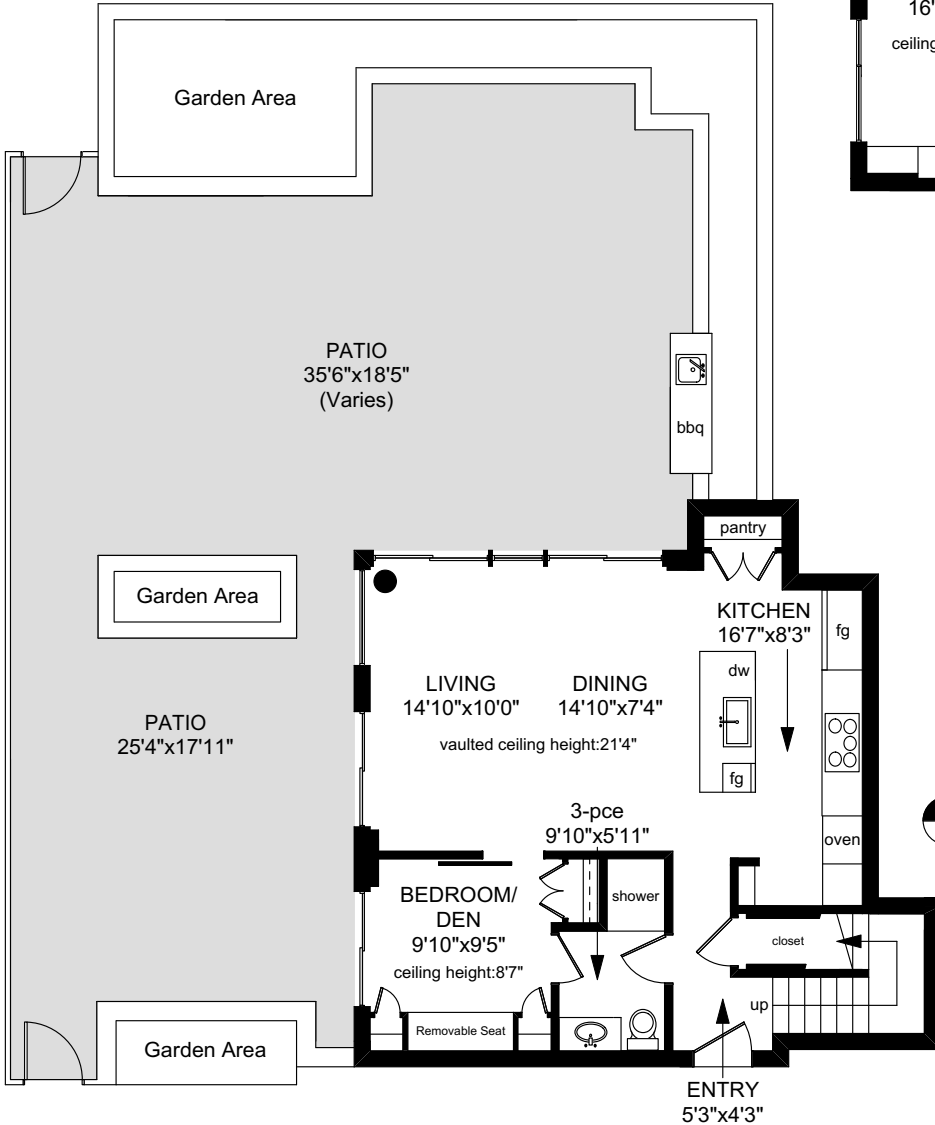
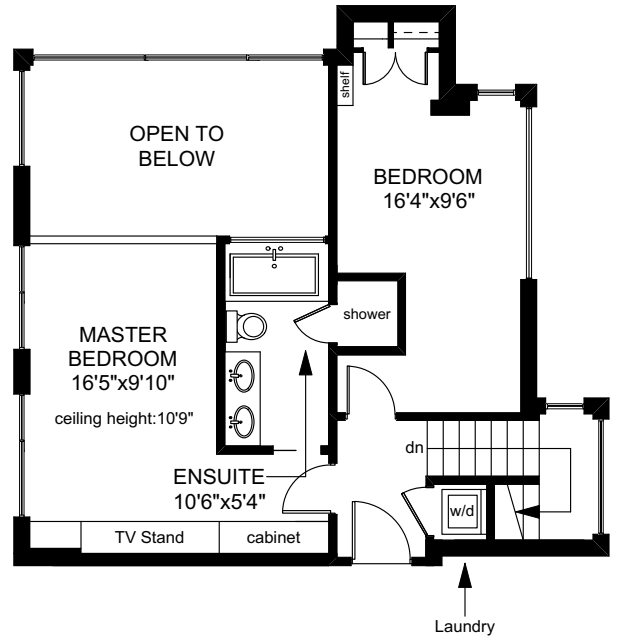


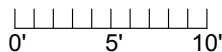
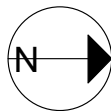
500 - 770 FISGARD STREET

UPPER FLOOR
594 SQ.FT



MAIN FLOOR
759 SQ.FT

	FINISHED SQ. FT.	UNFINISHED SQ. FT.	TOTAL SQ. FT.
MAIN	759	0	759
UPPER	594	0	594
TOTAL	1353	0	1353
PATIO	0	1146	1146



PREPARED FOR THE EXCLUSIVE USE OF
SYLVIA THERRIEN,
PERSONAL REAL ESTATE CORPORATION,
OF NEWPORT REALTY

MEASURED ON: 10/19/17
DRAWING FILE: 17013

Taf Measure VICTORIA, B.C.
Ph. 883.8894
www.tafmeasure.com

NOTE: This floor plan is provided by Newport Realty Ltd. as a convenient reference only, and is not to be relied upon as accurate. Prospective Buyers must satisfy themselves not only of the actual measurements, but also to the status of any finished space shown on this floor plan, specifically in relation to minimum ceiling height for habitable rooms required by the BC Building Code, allowable finished floor area in relation to current zoning, and determination if space was developed with necessary municipal permits.